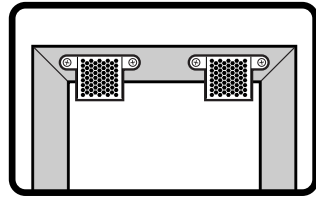


HANGING INSTRUCTIONS

Your canvas comes pre-installed with Beehive installation brackets.

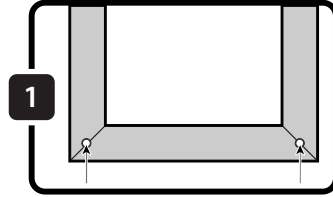
Please note: BeeHive brackets are designed to be used in drywall only.

You can watch the videos on how to hang your canvas here: <https://beehivepicturehangers.com/videos/>



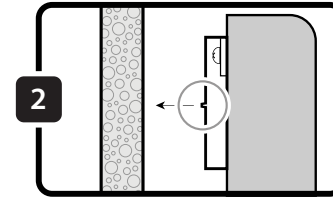
Step 1

Stick the protective rubber bumpers to the bottom corners of the frame.



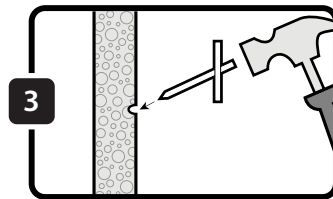
Step 2

Hold the frame up to the wall in the desired position and press against the top of the frame. Apply enough pressure so the Positioning Points (the small points on the front of the hangers) mark your drywall.



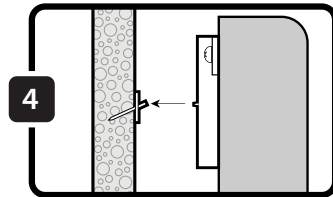
Step 3

Insert the Support Pins into the wall where you've made your marks. Be sure to hold the Support Pins so the rectangular plate is parallel to the wall while inserting at a downward angle. You can press the pins into the wall, or very gently use a hammer.



Step 4

Hang your frame on the Support Pins. If adjustment is required, simply lift the frame from the pin(s) and reinsert into another hole in the hanger.

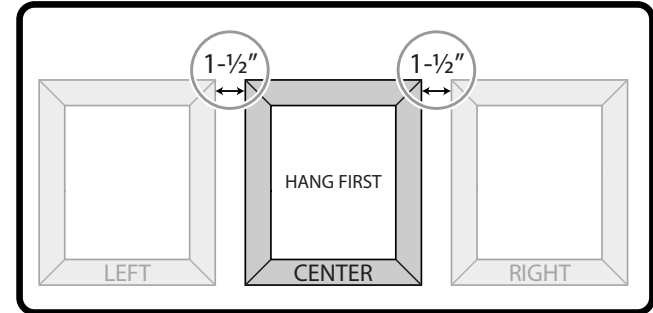


TRIPTYCH SPACING

Starting with the center frame first, follow steps 1-4 from the "HANGING INSTRUCTIONS" section.

Hang additional frames (left/right) or (top/bottom) with 1-1/2" gap between each frame.

LANDSCAPE



PORTRAIT

